

MAJOR SCALE FORMULA: W-W-H- W -W-W-H

CIRCLE OF 5ths: Count up 5 notes (1-2-3-4-5-6-7-1)

Key of C = No sharps or flats		· C-D-E-F-G-A-B-C
Key of G = 1 sharp	(F#)	· G-A-B-C-D-E-F#-G
Key of D= 2 sharps	(F#, C#)	· D-E-F-G-A-B-C-D
Key of A= 3 sharps	(F#, C#, G#)	· A-B-C#-D-E-F#-G#-A
Key of E= 4 sharps	(F#, C#, G#, D#)	· E-F#-G#-A-B-C#-D#-E
Key of B= 5 sharps	(F#, C#, G#, D#, A#)	· B-C#-D#-E-F#-G#-A#-B
Key of F#= 6 sharps	(F#, C#, G#, D#, A#, E#)	· F#-G#-A#-B-C#-D#-E#-F#
Key of C#= 7 sharps	(F#, C#, G#, D#, A#, E#, B#)	· C#-D#-E#-F#-G#-A#-B#-C#

CIRCLE of 4ths: Count up 4 notes (1-2-3-4-5-6-7-1)

Key of C = No sharps or flats		· C-D-E-F-G-A-B-C
Key of F= 1 flat	(Bb)	· F-F-A-Bb-C-D-E-F
Key of Bb= 2flats	(Bb, Eb)	· Bb-C-D-Eb-F-G-A-Bb
Key of Eb= 3flats	(Bb, Eb, Ab)	· Eb-F-G-Ab-Bb-C-D-Eb
Key of Ab=4 flats	(Bb, Eb, Ab, Db)	· Ab-Bb-C-Db-Eb-F-G-Ab
Key of Db= 5 flats	(Bb, Eb, Ab, Db, Gb)	· Db-Eb-F-Gb-Ab-Bb-C-D
Key of Gb= 6 flats	(Bb, Eb, Ab, Db, Gb, Cb)	· Gb-Ab-Bb-Cb-Db-Eb-F-Gb
Key of Cb = 7 flats	(Bb, Eb, Ab, Db, Gb, Cb, Fb)	· Cb-Db-Eb-Fb-Gb-Ab-Bb-Cb

3 Easy Keys:

C = No sharps or flats	· C-D-E-F-G-A-B-C
C# = ALL sharps	· C#-D#-E#-F#-G#-A#-B#-C#
Cb = ALL flats	· Cb-Db-Eb-Fb-Gb-Ab-Bb-Cb

KEY SIGNATURE MEMORIZATION - SHARPS :

SHARP KEYS:

Key of C = No sharps or flats

· C-D-E-F-G-A-B-C

Key of G = 1 sharp (F#)

· G-A-B-C-D-E-F#-G
1 2 3 4 5 6 7

7th note is NEW sharp

Key of D= 2 sharps (F#, C#)

· D-E-F#-G-A-B-C#-D
1 2 3 4 5 6 7

7th note is NEW sharp

Key of A= 3 sharps (F#, C#, G#)

· A-B-C#-D-E-F#-G#-A
1 2 3 4 5 6 7

7th note is NEW sharp

Key of E= 4 sharps (F#, C#, G#, D#)

· E-F#-G#-A-B-C#-D#-E
1 2 3 4 5 6 7

7th note is NEW sharp

Key of B= 5 sharps (F#, C#, G#, D#, A#)

· B-C#-D#-E-F#-G#-A#-B
1 2 3 4 5 6 7

7th note is NEW sharp

Key of F#= 6 sharps (F#, C#, G#, D#, A#, E#)

· F#-G#-A#-B-C#-D#-E#-F#
1 2 3 4 5 6 7

7th note is NEW sharp

Key of C#= 7 sharps (F#, C#, G#, D#, A#, E#, B#)

· C#-D#-E#-F#-G#-A#-B#-C#
1 2 3 4 5 6 7

7th note is NEW sharp

KEY SIGNATURE MEMORIZATION - SHARPS :

ORDER OF SHARPS:

Sharps follow in logical order:

F# C# G# D# A# E# B#

They are written on the staff in EXACTLY the same order:

F# C# G# D# A# E# B#

Key of C Key of G

Key of D Practice!

Key of A Practice!

KEY SIGNATURE MEMORIZATION - SHARPS :

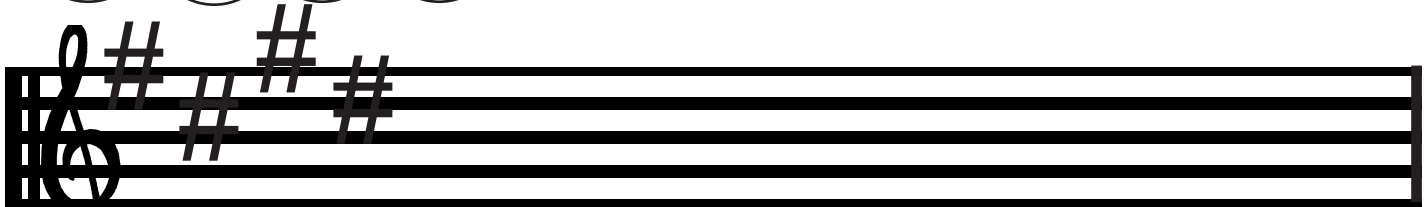
ORDER OF SHARPS:

Sharps follow in logical order:

F# C# G# D# A# E# B#

They are written on the staff in EXACTLY the same order:

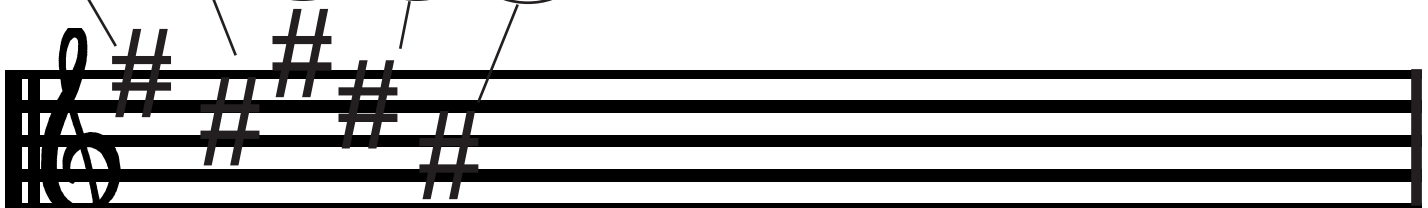
F# C# G# D# A# E# B#



Key of E

Practice!

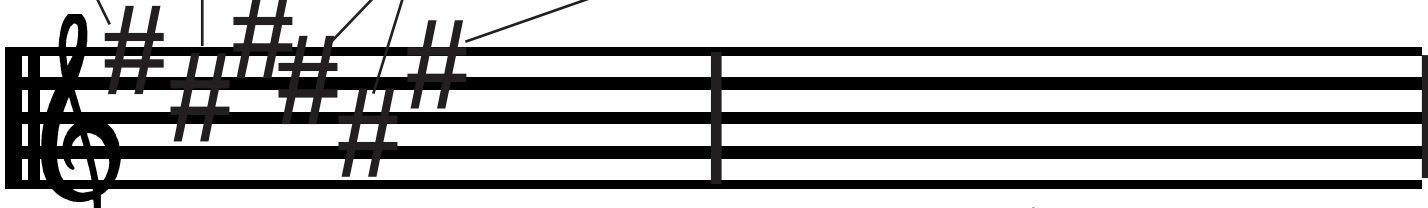
F# C# G# D# A# E# B#



Key of B

Practice!

F# C# G# D# A# E# B#



Key of F#

Practice!